



## Custom Track Service Percent Worn

**HOLT TEXAS LTD.**

**HOWARDMCANEAR EQUIPMENT**  
(0585540)

Prepared By: Cory Whitaker

<b>Model</b>	D5K2XL	<b>Job Site</b>	HM FW		<b>Inspection Date</b>	13-Oct-2020
<b>Manufacturer</b>	Caterpillar		<u>Left</u>	<u>Right</u>	<b>Next Inspection Date</b>	--
<b>Serial Number</b>	KW200250	<b>Track Sag</b>	--	--	<b>Next Inspection Hours</b>	--
<b>Reference Number</b>	--	(1.5 in - 2.0 in)			<b><u>Underfoot Conditions</u></b>	
<b>Hour Meter Reading</b>	3,292.3	<b>Frame Ext</b>	--	--	<b>Impact</b>	Moderate
<b>Hours Per Week</b>	--	<b>Dry Joints</b>	--	--	<b>Abrasion</b>	Moderate
<b><u>Total Odometer Reading</u></b>	--	<b>Internal Wear</b>	0%	0%	<b>Moisture</b>	Moderate
<b>Forward Odometer</b>	--		27 in	27 in	<b>Packing</b>	Moderate
<b>Reverse Odometer</b>	--				<b>Bushing Allowable Wear</b>	Greater
					<b>Link Allowable Wear</b>	Greater

Position	Part Number		Status		Date Installed		SMU Installed		Hours on Wear Surface		Measurement (inches)		Percent Worn		
	Left	Right	Left	Right	Left	Right	Left	Right	Left	Right	Left	Right	Left	Right	
<b>Track Link</b>		<b>Left Link Assembly:2890270</b>				<b>Right Link Assembly:2890270</b>									
	6Y9261	6Y9261	Original	Original	--	--	--	--	--	--	0.97 (U)	0.97 (U)	34%	34%	
<b>Track Bushing</b>															
	2243959	2243959	Original	Original	--	--	--	--	--	--	0.43 (U)	0.43 (U)	32%	32%	
<b>Track Shoe</b>		<b>Left Width:20.1in</b>				<b>Right Width:20.1in</b>									
	8E9812	8E9812	Original	Original	--	--	--	--	--	--	1.61 (U)	1.6 (U)	67%	68%	
<b>Idlers</b>															
<b>Front</b>	4195476	4195476	Original	Original	--	--	--	--	--	--	0.71 (D)	0.71 (D)	20%	20%	
<b>Carrier Roller</b>															
<b>Front</b>	6K9880	6K9880	Original	Original	--	--	--	--	--	--	5.92 (C)	5.88 (C)	40%	44%	
<b>Track Roller</b>															
<b>Front</b>	S	3468807	3468807	Original	Original	--	--	--	--	--	1.35 (U)	1.34 (U)	22%	25%	
<b>2</b>	D	3470406	3470406	Original	Original	--	--	--	--	--	1.36 (U)	1.36 (U)	20%	20%	
<b>3</b>	S	3468807	3468807	Original	Original	--	--	--	--	--	1.35 (U)	1.37 (U)	22%	17%	
<b>4</b>	S	3468807	3468807	Original	Original	--	--	--	--	--	1.36 (U)	1.36 (U)	20%	20%	
<b>5</b>	D	3470406	3470406	Original	Original	--	--	--	--	--	1.36 (U)	1.36 (U)	20%	20%	
<b>6</b>	S	3468807	3468807	Original	Original	--	--	--	--	--	1.35 (U)	1.35 (U)	22%	22%	
<b>Sprocket</b>															
	2782358	2782358	Original	Original	--	--	--	--	--	--	--	--	--	--	
CONDITION: Good							CONDITION: Good								

## General Recommendations

monitor track shoes. rest of UC is in good shape.

### Photos

Pre-Inspect

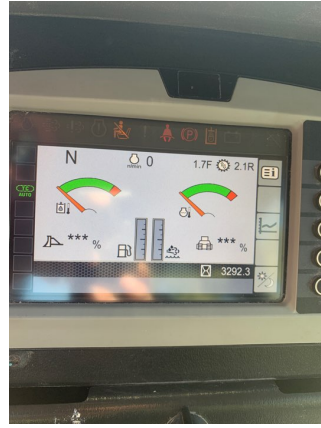
---



Pre-Inspect



Pre-Inspect



Pre-Inspect

---